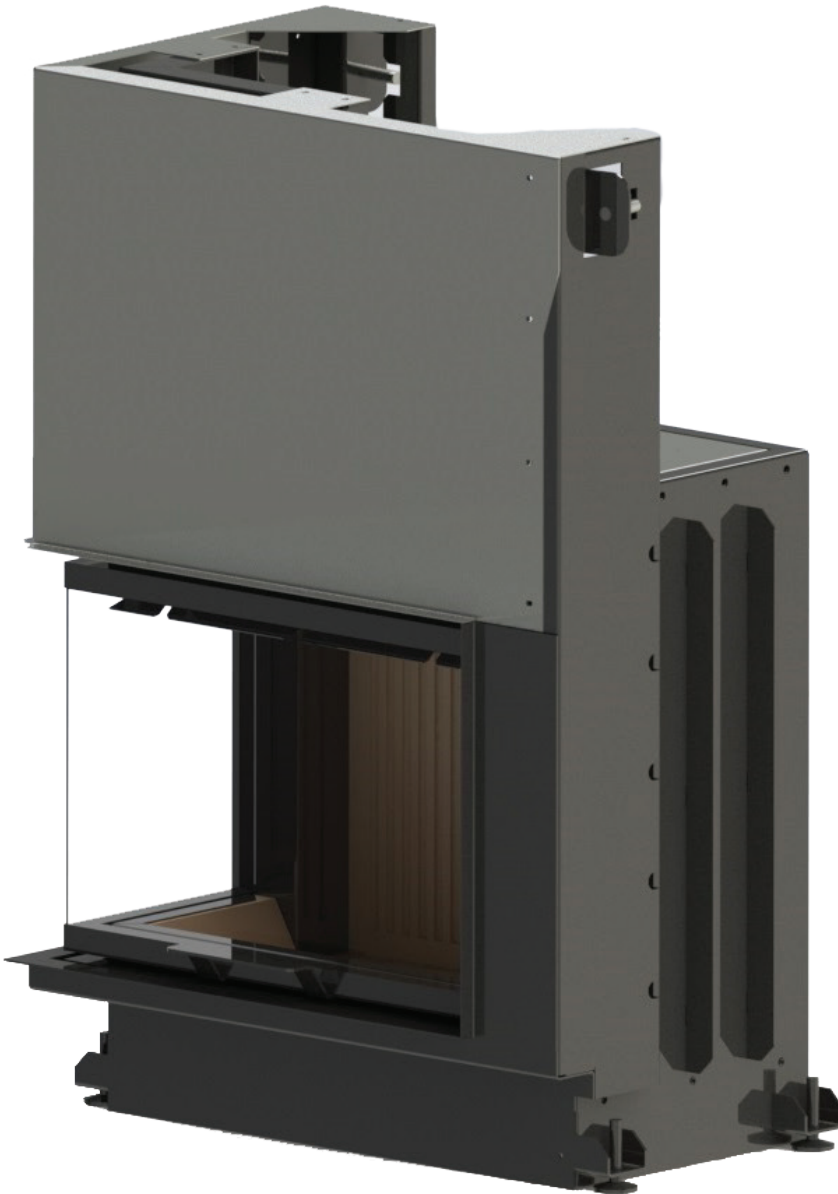


ECO SERIES

Quattro 90 L ECO

A



TECHNICAL SPECIFICATION

MODEL QUATTRO 90 L ECO

POWER	8 - 14 KW
EFFICIENCY	70%
CONSUME	3,7 KG/H
FRESH AIR INLET	ø 160 MM
WEIGHT	204 KG
FLUE GAS TEMPERATURE	206 °C
FUEL	WOOD/BRIQUETTE
PIPE DIAMETER	ø 200 MM
WARRANTY	2 YEARS

OVERALL DIMENSION

HEIGHT	1265 MM
DEPTH	515 MM
WIDTH	910 MM

