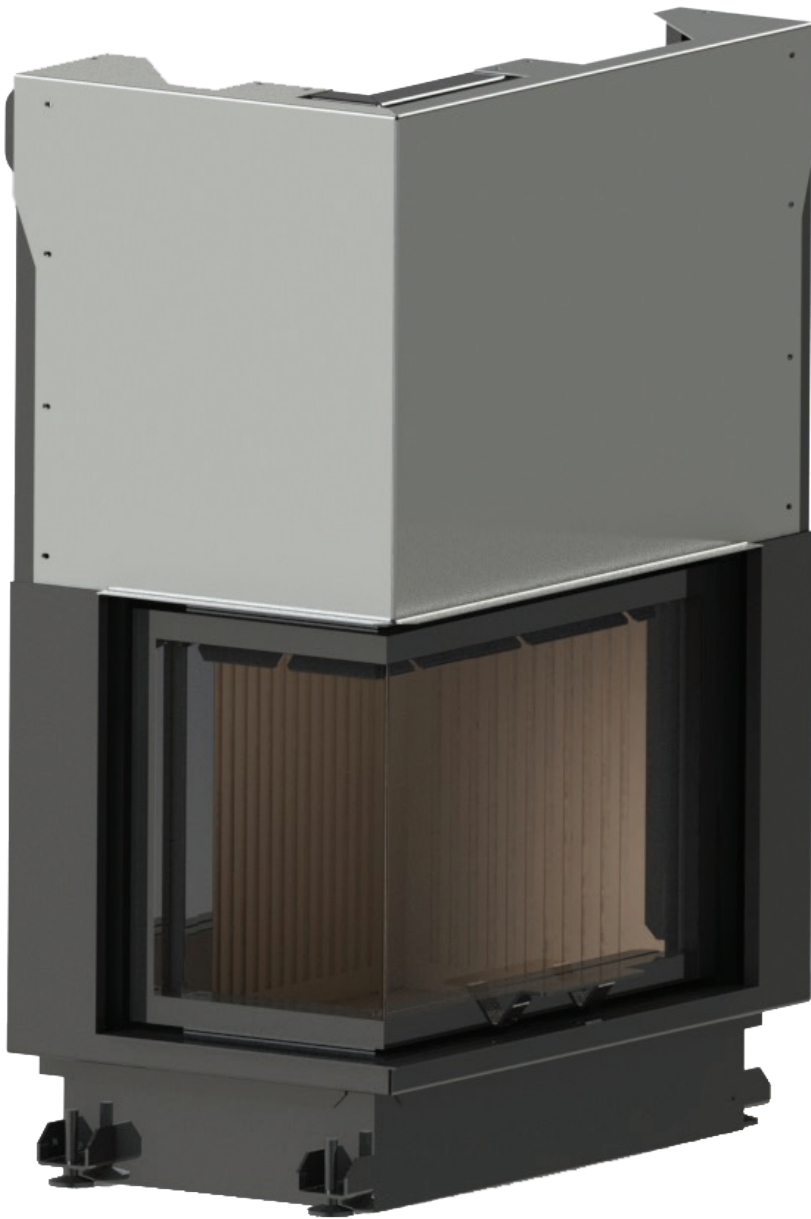


ECO SERIES

Quattro 100 L ECO

A



## TECHNICAL SPECIFICATION

MODEL	QUATTRO 100 L ECO
POWER	13 - 17 KW
EFFICIENCY	> 70%
CONSUME	4,3 KG/H
FRESH AIR INLET	ø 160 MM
WEIGHT	216 KG
FLUE GAS TEMPERATURE	198 °C
FUEL	WOOD/BRIQUETTE
PIPE DIAMETER	ø 200 MM
WARRANTY	2 YEARS

## OVERALL DIMENSION

HEIGHT	1265 MM
DEPTH	515 MM
WIDTH	1060 MM

