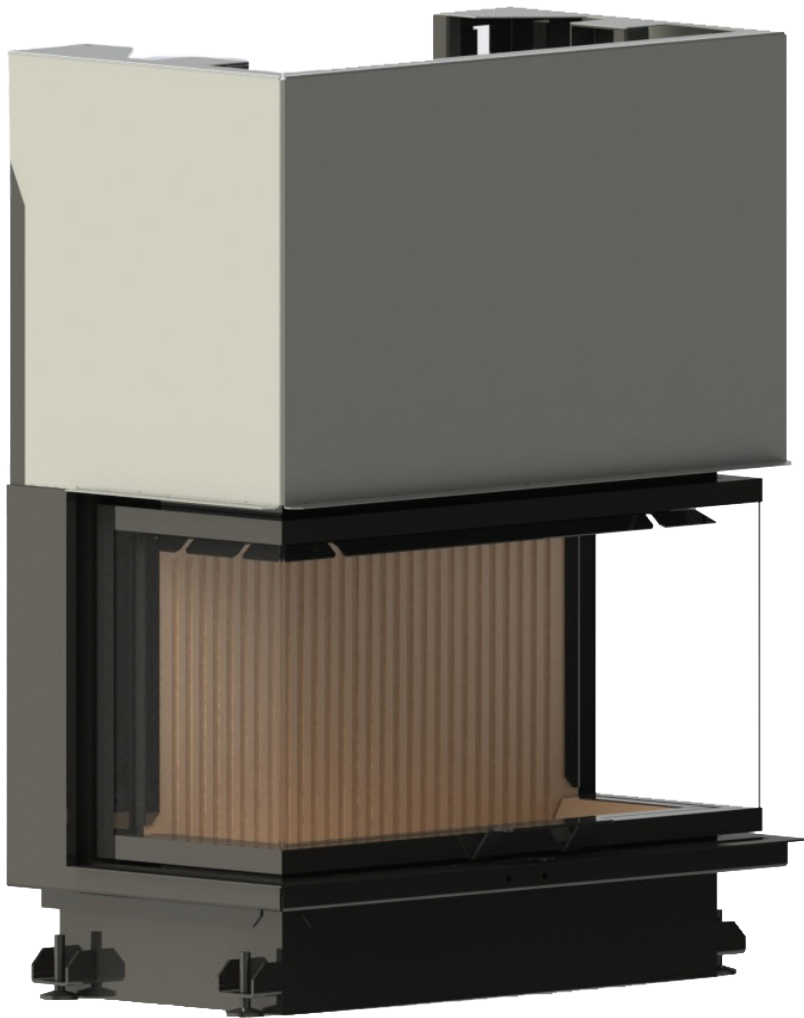


ECO SERIES

Crystal 90 ECO

A



TECHNICAL SPECIFICATION

MODEL CRYSTAL 90 ECO

POWER	10 - 17 KW
EFFICENCY	> 70%
CONSUME	4,3 KG/H
FRESH AIR INLET	ø 160 MM
WEIGHT	200 KG
FLUE GAS TEMPERATURE	213 °C
FUEL	WOOD/BRIQUETTE
PIPE DIAMETER	ø 200 MM
WARRANTY	2 YEARS

OVERALL DIMENSION

HEIGHT	1265 MM
DEPTH	512 MM
WIDTH	934 MM

